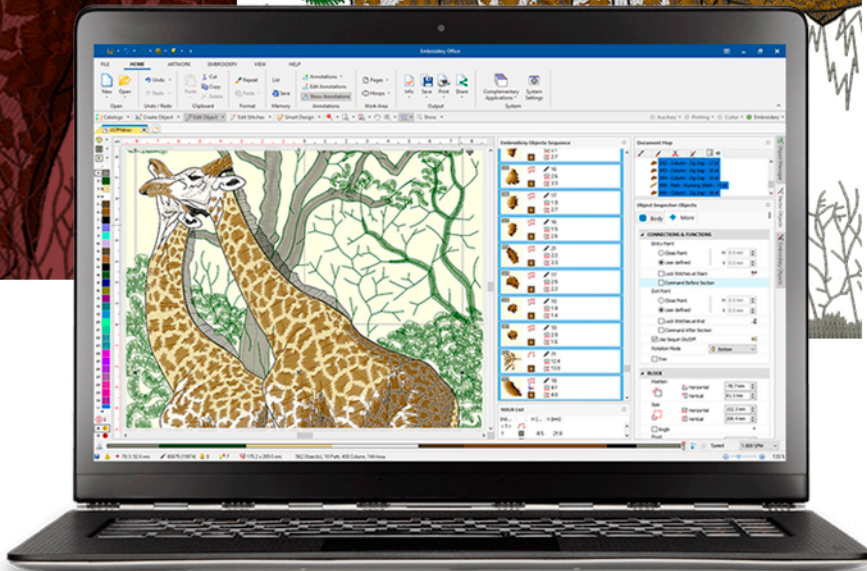
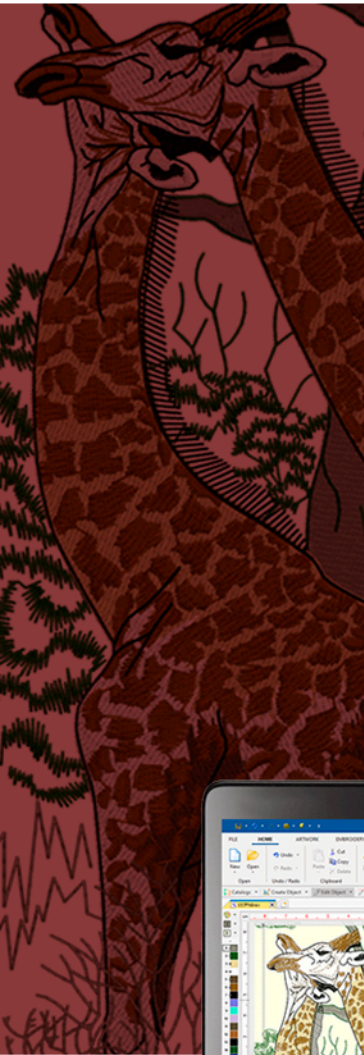


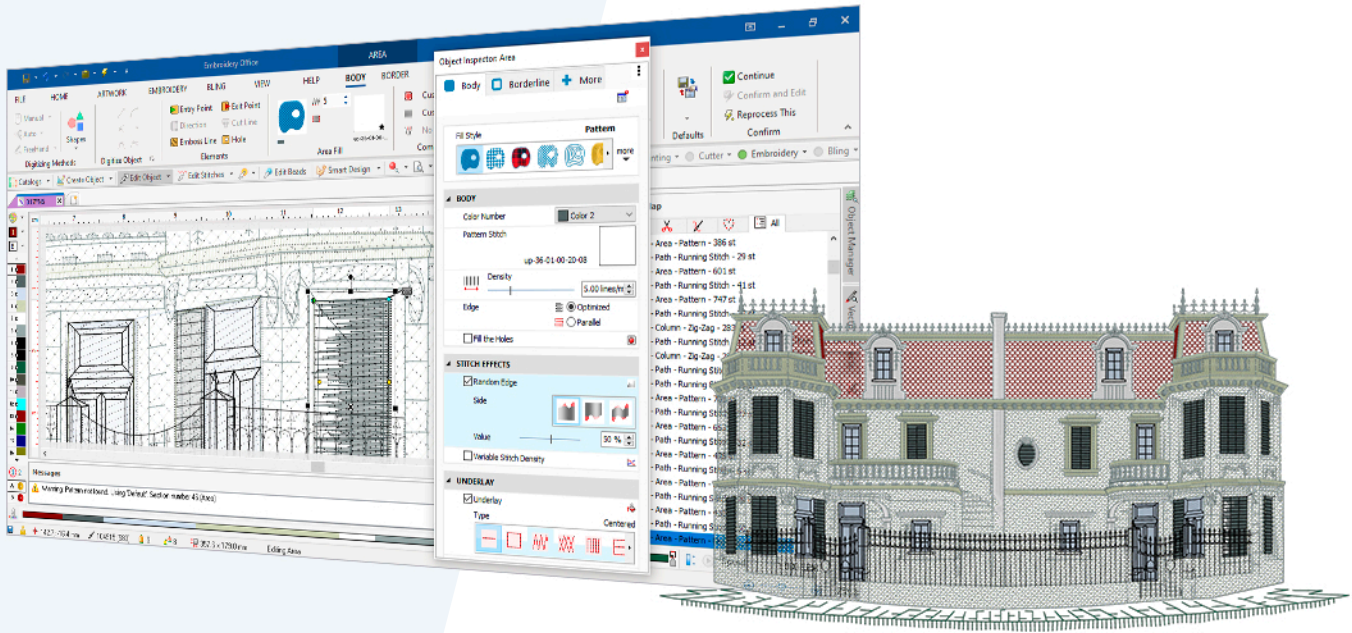
EMBROIDERY OFFICE



Advanced stand-alone embroidery digitizing software. No need to get any other graphic application as this product contains all the required modules and features. Create your own custom components to become more productive yet!

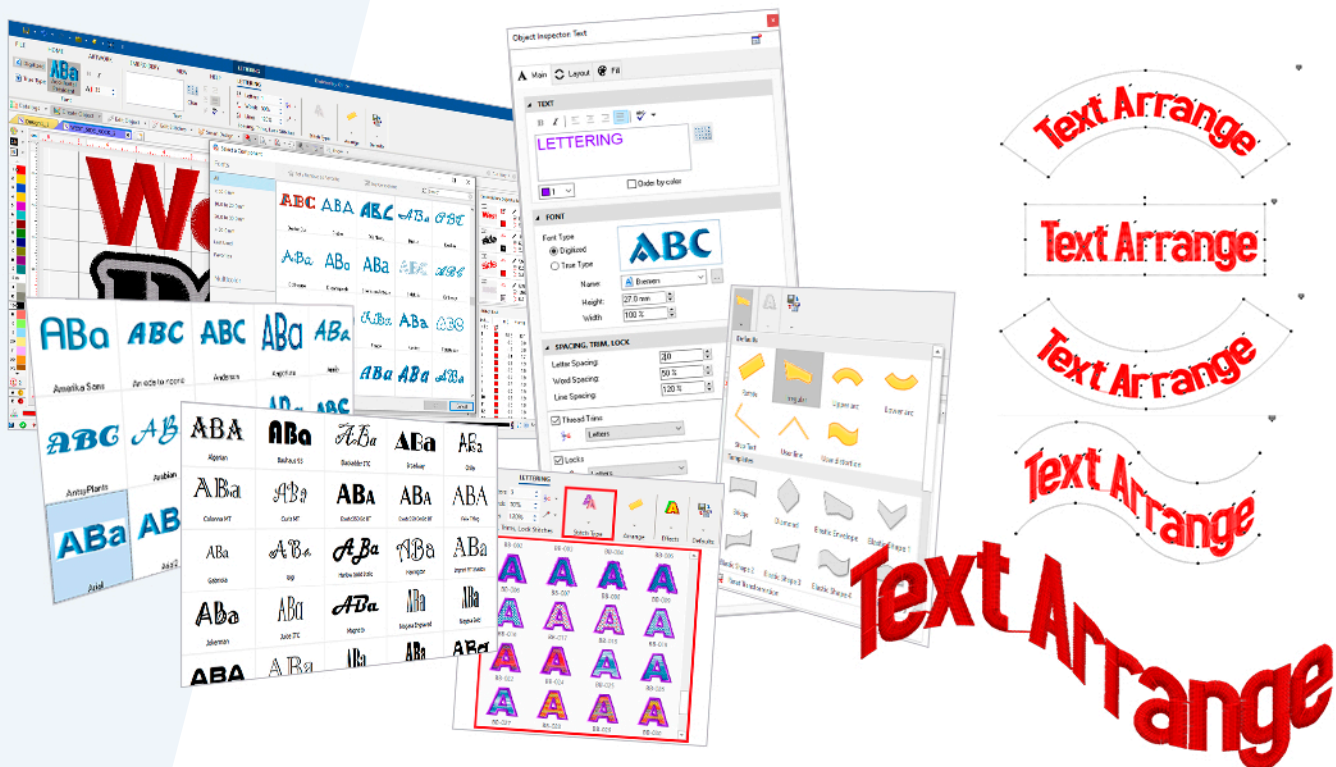
The most modern and user-friendly user interface

The most beautiful and productive tool we have ever developed. Well organized toolset and many optional synchronized views (that you can show or hide) help you to create amazing designs and edit existing designs with ease. It is intuitive and easy to learn, regardless of how creatively demanding or sophisticated the design needs are. This outstanding product includes all the resources to create amazing designs from scratch. Document map, a tree view that includes the objects sequence. Object inspector, a panel to view and edit all the object properties. Embroidery object sequence, graphic list of embroidery objects. Embroidery stitch sequence, an editable list of individual stitches and machine commands. Navigation bar, to see the progress of the stitch sequence with slow redraw. Simulation window.



Unlimited lettering options to personalize your designs easily

Choose your favorite font from the catalog of nice built-in scalable pre-digitized fonts, write your text, select the best layout and edit it until you get the result you are looking for. Simple individual letter control. More than 170 professionally digitized fonts for unlimited applications! Unlimited embroidery fonts! As this product includes True Type Font compatibility, you can literally use thousands of fonts from Internet that will be automatically converted to embroidery. If you are a pro, you can also create new embroidery fonts for your component library!



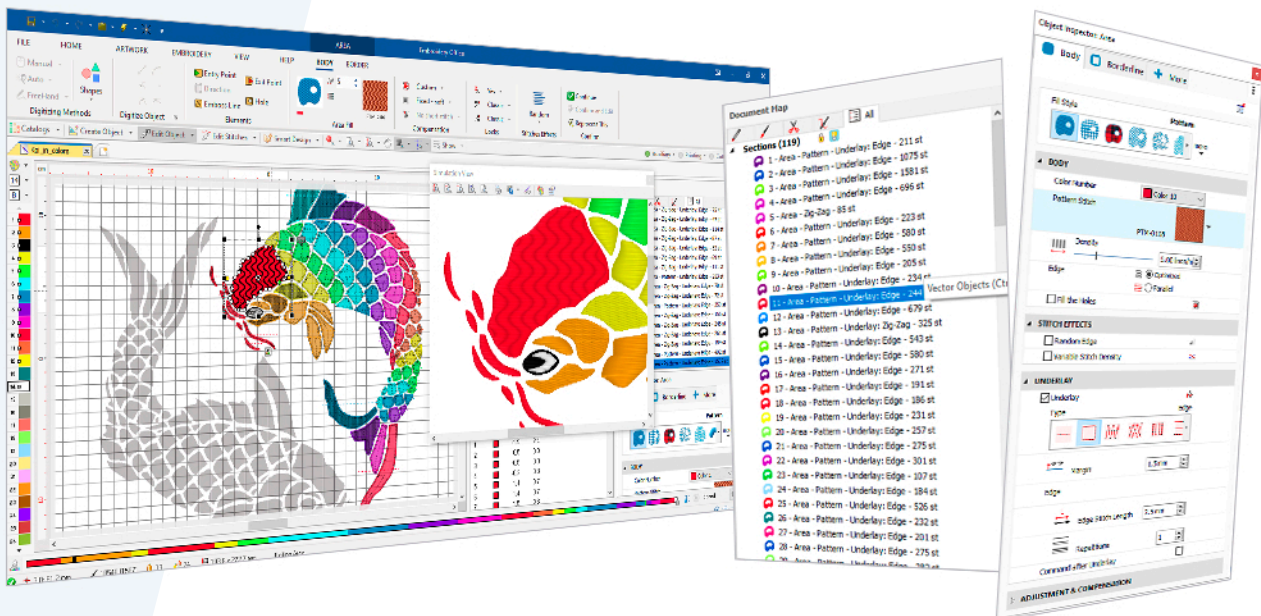
More digitizing modes and fill styles than you'll ever use!

This product offers a huge variety of stitches fill styles for each embroidery object. Each style can be fully customized to produce an unlimited number of beautiful stitches fill effects. While you can see and edit the most used object properties on the ribbon-bar (above the working area); the Object Inspector allows you to adjust the properties in detail to accurately control each part of the design. Choose your favorite style for lines and areas, and personalize it (change the pattern, density, stitch length, etc) to produce amazing embroidery objects. You can also edit the material compensation adjustments (underlay stitches, short stitches, pull compensation, etc). Fill Styles include paths with running, zig-zag, e-stitches, longitudinal and programmable stitches, Areas with uniform patterns, graphic patterns, programmable stitches, textures, applique, stippling, photo stitches and cross stitches. Turning areas with zig-zag, e-stitches, longitudinal, elastic uniform patterns, elastic graphic patterns and elastic programmable stitches, paths with sequin. Digitizing modes include: standard digitizing (arc & bezier), hand free digitizing, auto-digitize shapes, autoshapes & vector objects, auto-trace on raster image regions, auto-fill on raster and vector images, auto-trace and auto-fill on complex color images.

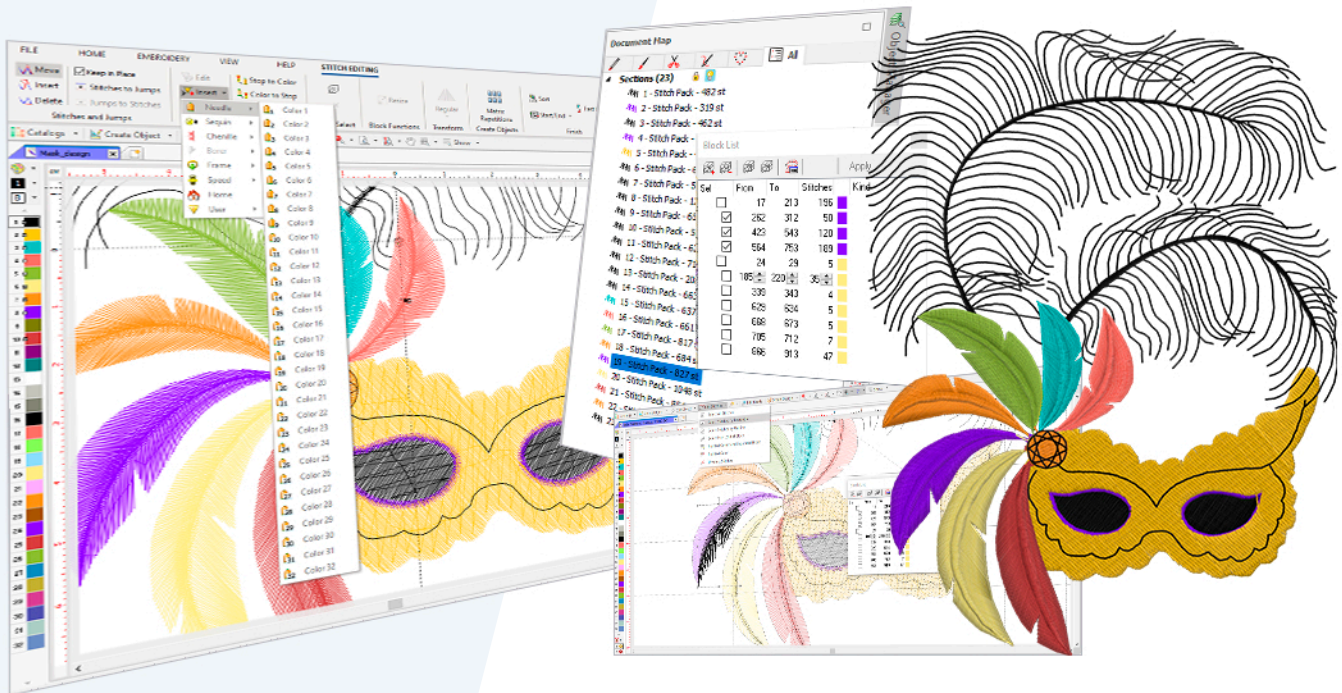


Full object editing options to perfect your design

Full advanced object, block and stitch editing features at a click! Created designs can be fully edited within this single application. Not only it refers to embroidery objects; users can also edit vector objects and raster images within this single application too (no need to switch to other applications). Change the shape of the objects, scale, move, duplicate, combine, etc. Change the elements of the shape (outline, hole, stitch direction, entry and exit point, etc). You can also change the fill style, change the component and edit each object property, effect or adjustment.

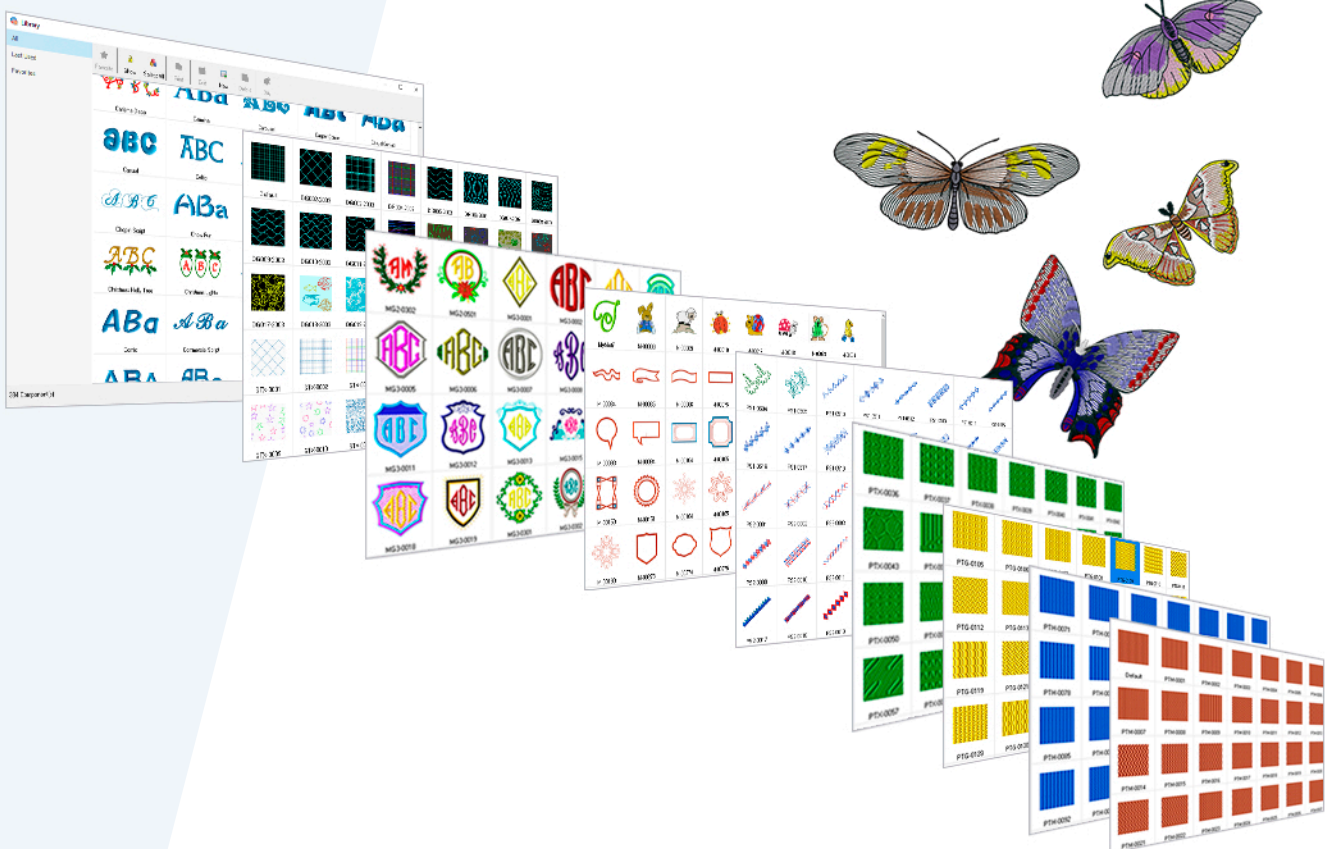


Stitch Editing: Add, move and delete individual stitches. Select a block of stitches, move, delete and duplicate the block. Control the design quality and resolution accurately! Change the density of the fill style of a selected block of stitches. Convert a block of stitches (expanded) into embroidery objects (condensed). Edit the object (wireframe and properties). Merge several designs or merge designs with embroidery texts.



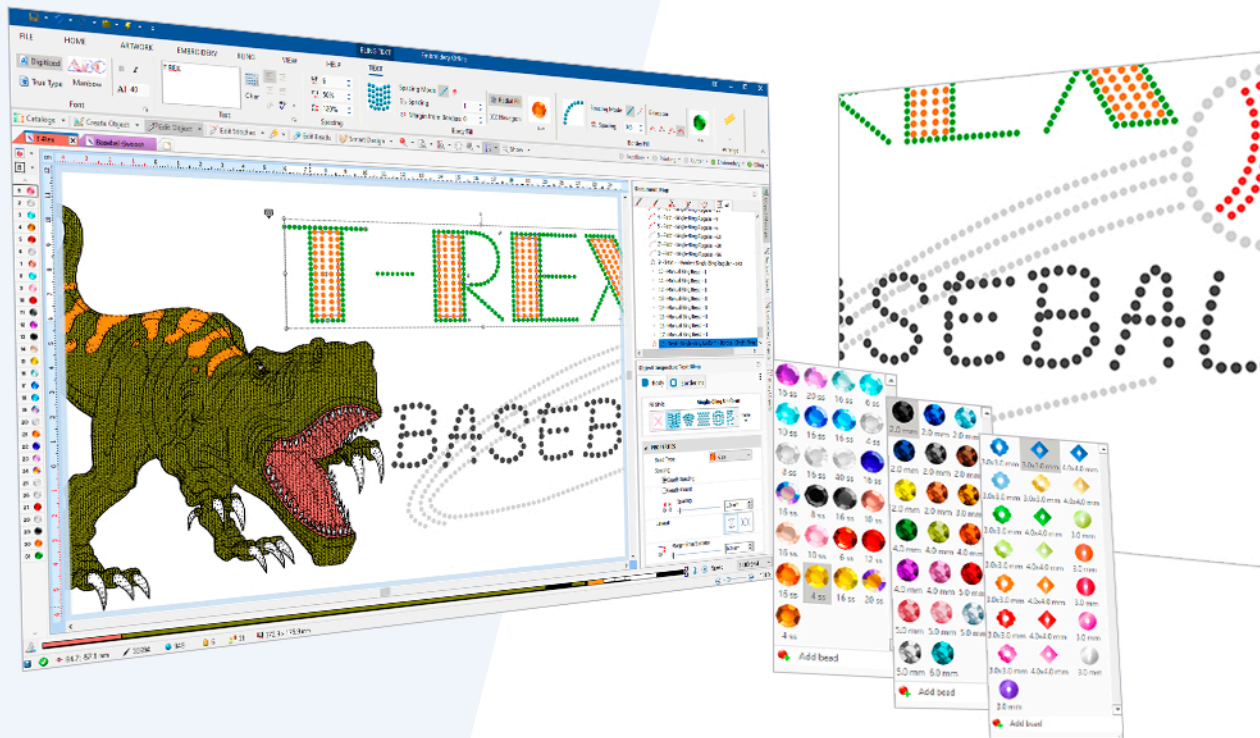
The most complete **Component Library**

One of the most productive resources of Embroidery Office are the reusable components. Examples of components are: stitch patterns, textures, programmable stitches, pre-digitized fonts, etc. This product offers a wide variety of components. Users can also purchase unexpensive extra components to enlarge the existing library. More than 300 patterns and 150 programmable stitches included. You can also create new custom components through the included components builders!



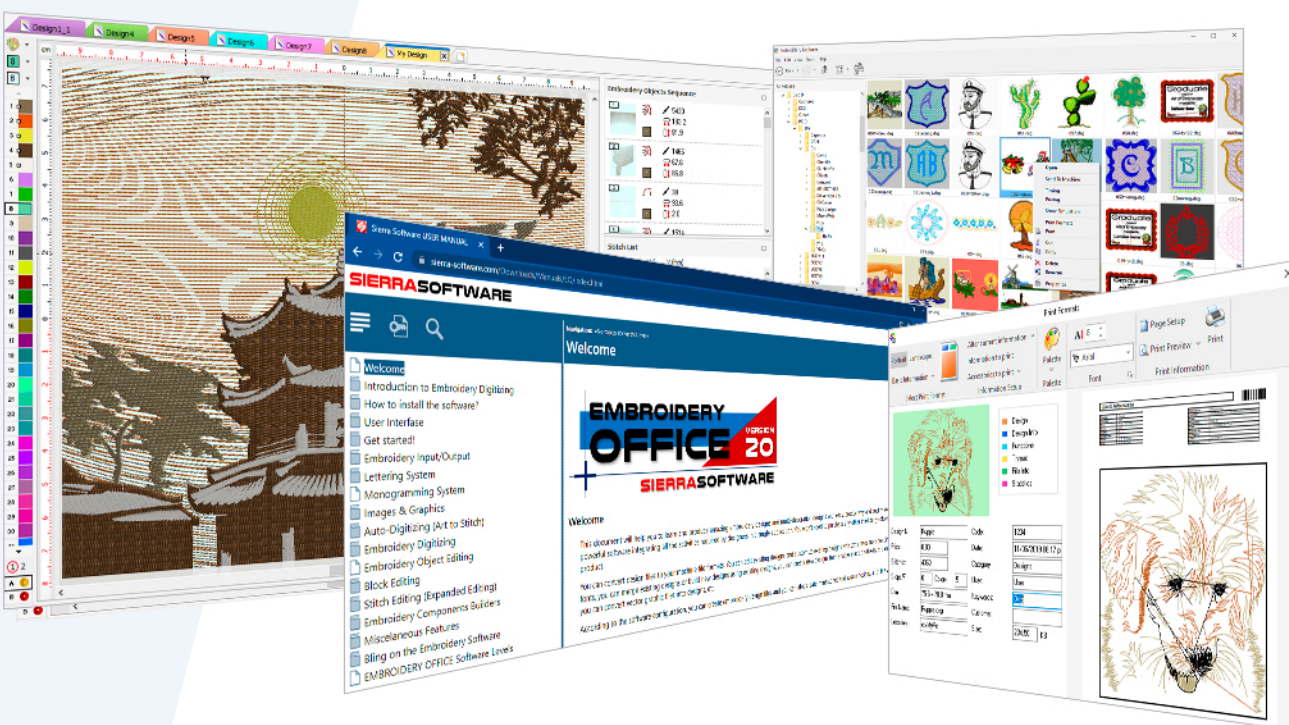
Add bling to your designs!

This is a multi-decoration software! You can also create rhinestone, sequin and spangle designs. You can use the full set of tools for creating hotfix designs in the same way you do for embroidery! Hotfix rhinestone, rhinestuds, sequin and spangle component library. * This is an optional feature.



A complete toolset

Multi-document interface (MDI) to create and work on several designs at the same time. Native (system) file format allows you to fully edit every embroidery object as if it was just created. On-line context help and manual. On-screen design simulation. Realistic simulation window. Export to png. Embroidery explorer to view designs as graphic catalogs, cut-copy-paste, search, convert from/to machine file formats, etc. Many customizable embroidery print formats. Many available commercial thread charts included, and new thread charts can be imported to enlarge the existing library. Hoops library and hoop builder. Open (and save) raster image files, image processing tools. Open (and save) vector image files, create, edit, group, order and combine vector objects. Vectorizer included, to convert raster images into vector images.





Thank you for considering the purchase of our software products. We have been continuously developing this application for over 30 years, and even today we continue to improve it so that you can have the most competitive product at the most convenient conditions.

Since development is an ongoing process with no end in sight, it is possible that some images included in this brochure may differ from the product we are currently marketing. New minor and major versions are introduced with some frequency. This product may have some optional features not included in this document.

This product includes hundreds of general and specific features not presented in this brochure for reasons of space and relevance. If you have any particular requirements, you can make any inquiry to our authorized distributors. Our official website also contains a wealth of information and a more detailed feature chart. You can also request a functional demonstration of this product from your local distributor or through the official website. A functional demonstration will allow you to learn about this product's capabilities, ease of use, performance and design quality.

Licensing options

You can purchase the product in either of 2 forms of licensing: **regular software product** (perpetual license, one-time payment for the available version) or **software subscription** (temporary license, recurring payments for the most current version).

2x1

Additional licenses (regular software product): Each product includes 2 software licenses (to run the software in 2 computers simultaneously). More licenses can be purchased at a very convenient price. When you upgrade the product, the upgrade will apply to all the included licenses.

3x1

Additional licenses (software subscriptions): Each subscription includes 3 software licenses (to run the software in 3 computers simultaneously). Optional components are not available on subscriptions.

This product is compatible with the most popular domestic, commercial and industrial machine file formats. Various software configurations are available to suit different customer needs. Please refer to the official website for system requirements.